

DEPARTMENT OF THE ARMY TECHNICAL MANUAL

**ORGANIZATIONAL, DIRECT SUPPORT, AND GENERAL
SUPPORT MAINTENANCE REPAIR PARTS AND SPECIAL
TOOLS LISTS (INCLUDING DEPOT MAINTENANCE
REPAIR PARTS AND SPECIAL TOOLS)
TEST SETS - I-199 AND I-199-A
FSN 6625-229-1065**

**Headquarters, Department of the Army, Washington, D.C.
15 August 1973**

Current as of February 1973

SECTION		Paragraph	Page
I.	INTRODUCTION		
	Scope	1-1	2
	General	1-2	2
	Explanation of columns	1-3	2
	Special information	1-4	4
	Location of repair parts	1-5	4
	Abbreviations (Not applicable)	1-6	4
	Reporting or equipment publication improvements	1-7	5
II.	PRESCRIBED LOAD ALLOWANCE (Not applicable)		
III.	REPAIR PARTS LIST		6
IV.	SPECIAL TOOLS, TEST AND SUPPORT EQUIPMENT (Not applicable)		
V.	REPAIR PARTS LIST		7
VI.	SPECIAL TOOLS, TEST AND SUPPORT EQUIPMENT (Not applicable)		
VII.	INDEX-FEDERAL STOCK NUMBER AND REFERENCE NUMBER		
	CROSS-REFERENCE TO FIGURE AND ITEM NUMBER		18

*This manual supersedes SIG 7&8 I-199, 19 October 1956, including all changes.

SECTION I INTRODUCTION

1 - 1 . Scope

This manual lists repair parts and special tools required for the performance of organizational, direct support, general support, and depot maintenance of the I-199 and I-199-A. The PCCN for the equipment is GTEACK for all models.

1-2. General

This repair parts and special tools list is divided into the following sections:

a. Prescribed Load Allowance (PLA)-Section II. Not applicable.

b. Repair Parts List-Section III. A list of repair parts authorized for the performance of maintenance at the organizational level. This repair parts list is arranged in alphabetical order.

c. Special Tools, Test and Support Equipment-Section IV. Not applicable.

d. Repair Parts List-Section V. A list of repair parts authorized for the performance of maintenance at the direct support, general support, and depot level.

e. Special Tools, Test and Support Equipment-Section VI. Not applicable.

f. Index-Federal Stock Number and Reference Number Cross-Reference to Figure and Item Number-Section VII. A list, in ascending numerical sequence, of all Federal stock numbers appearing in the listings, followed by a list, in alphameric sequence, of all reference numbers appearing in the listings. Federal stock number and reference numbers are cross-referenced to each illustration figure and item number or reference designation appearance.

1-3. Explanation of Columns

The following provides an explanation of columns found in the tabular list.

a. Source, Maintenance, and Recoverability Codes (SMR).

(1) Source code. Indicates the manner of acquiring support items for maintenance, repair, or overhaul of end items. Source codes are-

Code	Explanation
PA-	Item procured and stocked for anticipated or known usage.
PB--	Item procured and stocked for insurance purposes because essentiality dictates that a minimum quantity be available in the supply systems.
PC-	Item procured and stocked and which otherwise would be coded PA except that it is deteriorative in nature.

<i>Code</i>	<i>Explanation</i>
PD—	Support item, excluding support equipment, procured for initial issue or outfitting and stocked only for subsequent or additional initial issues or outfittings. Not subject to automatic replenishment.
PE—	Support equipment procured and stocked for initial issue or outfitting to specified maintenance repair activities.
PF—	Support equipment which will not be stocked but which will be centrally procured on demand.
PG—	Item procured and stocked to provide for sustained support for the life of the equipment. It is applied to an item peculiar to the equipment which because of probable discontinuance or shutdown of production facilities would prove uneconomical to reproduce at a later time.
KD—	An item of depot overhaul/repair kit and not purchased separately. Depot kit defined as a kit that provides items required at the time of overhaul or repair.
KF—	An item of a maintenance kit and not purchased separately. Maintenance kit defined as a kit that provides an item that can be replaced at organizational or direct support or general support levels of maintenance.
KB—	Item included in both a depot overhaul/repair kit and a maintenance kit.
MO—	Item to be manufactured or fabricated at organizational level.
MF—	Item to be manufactured or fabricated at direct support maintenance level.
MH—	Item to be manufactured or fabricated at general support maintenance level.
MD—	Item to be manufactured or fabricated at depot maintenance level.
AO—	Item to be assembled at organizational level.
AF—	Item to be assembled at direct support maintenance level.
AH—	Item to be assembled at general support maintenance level.
AD—	Item to be assembled at depot maintenance level.
XA—	Item is not procured to stocked because the requirements for the item will result in the replacement of the next higher assembly.
XB—	Item is not procured or stocked. If not available through salvage, requisition.
XC—	Installation drawing, diagram instruction sheet, field service drawing, that is identified by manufacturers' part number.

Code Explanation
XD— Support items can be requisitioned with justification.

NOTE

Cannibalization or salvage may be used as a source of supply for any items source coded above except those coded XA and aircraft support items as restricted by AR 700-42.

(2) Maintenance code. Maintenance codes are assigned to indicate the levels of maintenance authorized to USE AND REPAIR support items. The maintenance codes are entered in the third and fourth positions of the Uniform SMR Code Format as follows--

(a) Use (third position). The maintenance code entered in the third position indicates the lowest maintenance level authorized to remove, replace, and use the support item. The maintenance code entered in the third position indicates one of the following levels of maintenance.

Code	Application/Explanation
O--	Support item is removed, replaced, used at the organizational level of maintenance.

NOTE

A code "C" may be used in this position to denote crew or operator maintenance performed within organizational maintenance.

Code	Application/Explanation
F -	Support item is removed, replaced, used at the direct support maintenance level.
H-	Support item is removed, replaced, used at the general support maintenance.
D-	Support items that are removed, replaced, used at depot only.

(b) Repair (fourth position). The maintenance code entered in the fourth position indicates whether the item is to be repaired and identifies the lowest maintenance level with the capability to perform complete repair (i.e., all authorized maintenance functions). When a maintenance code is not used a dash (-) sign is entered. For multi-service equipment/systems or when a code is entered, this position will contain one of the following maintenance codes as assigned by the service(s) that require the code-

Code	Application/Explanation
O -	The lowest maintenance level capable of complete repair of the support item is the organizational level.
F —	The lowest maintenance level capable of complete repair of the support item is direct support.

CM?	Application/Explanation
H -	The lowest maintenance level capable of complete repair of the support item is general support.
D —	The lowest maintenance level capable of complete repair of the support item is the direct level.
L —	Repair restricted to designated Specialized Repair Activity.
Z —	Non-repairable. No repair is authorized.
B —	No repair is authorized. The item may be reconditioned by adjusting, lubricating, etc. , at the user level. No parts or special tools are procured for the maintenance of this item.

(3) Recoverability code. Recoverability codes are assigned to support items to indicate the disposition action on unserviceable items- The recoverability code is entered in the fifth position of the uniform SMR Code Format as follows-

Code	Explanation
Z -	Nonrepairable item. When unserviceable, condemn and dispose at the level indicated in the first digit of the maintenance code.
CL	Repairable item. When uneconomically repairable, condemn and dispose at organizational level.
F -	Repairable item. When uneconomically repairable, condemn and dispose at the direct support level.
H -	Repairable item. When uneconomically repairable, condemn and dispose at the general support level.
D-	Repairable item. When beyond lower level repair capability, return to depot. Condemnation and disposal not authorized below depot level.
L -	Repairable item. Repair, condemnation, and disposal not authorized below depot/Specialized Repair Activity level.
A -	Item requires special handling or condemnation procedures because of specific reasons (i.e., precious metal content, high dollar value, critical material or hazardous material).

b. Federal Stock Number. Indicates the Federal stock number assigned to the item and will be used for requisitioning purposes.

c. Description. Indicates the Federal item name and a minimum description required to identify the item. The last line indicates the reference number followed by the applicable Federal Supply Code for Manufacturer (FSCM) in parentheses. The FSCM is used as an element in item identification to designate manufacturer or distributor or Government agency, etc., and is identified in SB 708-42.

d. Unit of Measure (U/M). Indicates the standard or basic quantity by which the listed item is used in performing the actual maintenance function. This measure is expressed by a two-character alphabetical abbreviation; e.g., ea, in, pr, etc., and is the basis used to indicate quantities and allowances in subsequent columns. When the unit of measure differs from the unit of issue, the lowest unit of issue that will satisfy the required units of measure will be requisitioned.

e. Quantity Incorporated in Unit. This column indicates the quantity of the item used in the equipment. Subsequent appearances of the same item in the same assembly are indicated by the letters "REF".

f. 15-Day Organizational Maintenance Allowances.

(1) The repair parts indicated by an asterisk in the allowance column represent those authorized for use at the organizational category, and will be requisitioned on an "as required" basis, until stockage is based on demand in accordance with AR 710-2.

(2) Major Army commanders are authorized to approve reduction in the range of support items authorized for use in units within their commands. Recommendations for increase in range of items authorized for use will be forwarded to Commander, US Army Electronics Command, ATTN: AMSEL-MA-CRA, Fort Monmouth NJ., 07703.

(3) Allowance quantities are indicated in the special tools list section for special tools, TMDE, and other support equipment.

g. 30-Day DS GS Maintenance Allowances.

NOTE

Allowances in GS column are for GS maintenance only.

(1) The repair parts indicated by asterisk entries in separate allowance columns for DS and GS represent those authorized for use at that category of maintenance to be requisitioned on an "as required" basis, until stockage is based on demand in accordance with AR 710-2.

(2) Allowance quantities are indicated in the special tool lists section for special tools, TMDE, and other support equipment.

h. 1-Year Allowances Per 100 Equipments/Contingency Planning Purposes. Column intentionally left blank.

i. Depot Maintenance Allowance Per 100 Equipments. This column indicates opposite the first appearance of each item the total quantity authorized for depot maintenance of 100 equipments.

j. Illustration.

(1) Figure number. Indicates the figure number

of the illustration on which the item is shown in TM 11-2604.

(2) Item number. Indicates the item number or reference designation used to reference the item in the illustration.

1-4. Special Information

a. Usable on codes are included in column 3. Uncoded items are applicable to all models. Identification of the usable on codes used in this publication are-

Code	Used on
ANB	I-199
ANC	I-199-A

b. The following publication pertains to the equipment and its components:

TM 11-2604 Test Sets I-199 and I-199-A

1-5. Location of Repair Parts

a. This manual contains one cross-reference index (see VII) to be used to locate a repair part when either the Federal stock number or reference number (manufacturer's part number) is known. The first column in the index is prepared in numerical or alphanumeric sequence in ascending order. The reference numbers (manufacturer's part numbers) are listed immediately following the last listed Federal stock number in the index of Federal stock numbers.

b. When the Federal stock number or reference number is known, follow the procedures given in (1) and (2) below.

(1) Refer to the index of Federal stock numbers (sec VII), and locate the Federal stock number or reference number. The FSN and reference number are cross-referenced to the applicable figure and item number or reference designation.

(2) Refer to the repair parts list (sec III and V) and locate the figure number col 7a-20P, 10a-34P) and item number or reference designation (col 7b-20P, 10b-34P) as noted in the FSN index.

c. When the figure and item number or reference designation are known, scrutinize columns 7a-20P and 10a-34P, of the repair parts list (sec III and V) until the item is located.

d. When the FSN, reference number, figure number, and item number are not known, scrutinize column 3 of the repair parts list (sec III and V), which is arranged in alphabetical order.

1-6. Abbreviations

Not applicable.

**1-7. Reporting of Equipment Publication
Improvements**

The reporting of errors, omissions, and recommendations for improving this publication by the in-

dividual user is encouraged. Reports should be submitted on DA Form 2028 (Recommended Changes to Publications) and forwarded direct to Commander, US Army Electronics Command, ATTN: AMSEL-MA-CRA, Fort Monmouth, N.J., 07703.

SECTION III

TM 11-6625-799-24P

(1) SMR CODE	(2) FEDERAL STOCK NUMBER	(3) DESCRIPTION REFERENCE NUMBER & MFR CODE USABLE ON CODE	(4) UNIT OF MEAS	(5) QTY. INC IN UNIT	(6) 15-DAY ORGANIZATIONAL MAINTENANCE ALLOW				(7) ILLUSTRATION	
					(a) 1-5	(b) 6-20	(c) 21-50	(d) 51-100	(a) FIGURE NO.	(b) ITEM NO.
PAQZZ	6145-849-9758	CABLE, POWER, ELECTRICAL NO-REF-DESIG COPDAGE CD-134 2 NO. 10 AWG AND 2 NO. 14 AWG COPPER STRANDED COND. (3 FT LONG) SCC19899 (80063)	EA	1	*	*	*	*		
PAQZZ	6145-635-3740	CABLE, POWER, ELECTRICAL NO-REF-DESIG 2 NO. 8 AWG COPPER STRANDED COND. (3 FT LONG) 71-4945 (81351)	EA	1	*	*	*	*		
PAQZZ	6145-548-1255	CABLE, POWER, ELECTRICAL NO-REF-DESIG 6 STRD. NO. 18 AWG COPPER 11 STRD NO. 34 AWG (3 FT LONG) CO-06LGF6-18SJO4* 20 (96906)	EA	1	*	*	*	*		
PAQZZ	5920-568-5866	CAP. ELECTRICAL NO-REF-DESIG..... 932/1-1 (71400)	EA	2	*	*	*	*		
FAQZZ	5920-244-5150	CAP. ELECTRICAL NO-REF-DESIG..... 9435-1-2 (10133)	EA	2	*	*	*	*		
PAQZZ	5940-260-0447	CLIP, ELECTRICAL 0301 ALLIGATOR 1-1/4 IN MAX JAW OPENING SC011580-5 (80063)	EA	2	*	*	*	*		C301
PAQZZ	5940-260-0447	CLIP, ELECTRICAL 0302 ALLIGATOR 1-1/4 IN MAX JAW OPENING SC011580-5 (80063)	EA	2	*	*	*	*		C302
PAQZZ	5920-852-9086	CLIP, ELECTRICAL E35 FERRULE STYLE 3/4 IN.. LG X 1/2 IN WD X 7/16 IN H 125001 (75915)	EA	4	*	*	*	*		E35
PAQZZ	5920-852-9086	CLIP, ELECTRICAL E36 FERRULE STYLE 3/4 IN.. LG X 1/2 IN WD X 7/16 IN H 125001 (75915)	EA	2	*	*	*	*		E36
PAQZZ	5970-852-9086	CLIP, ELECTRICAL E37 FERRULE STYLE 3/4 IN.. LG X 1/2 IN WD X 7/16 IN H 125001 (75915)	EA	2	*	*	*	*		E37
PAQZZ	5920-852-9086	CLIP, ELECTRICAL E38 FERRULE STYLE 3/4 IN.. LG X 1/2 IN WD X 7/16 IN H 125001 (75915)	EA	2	*	*	*	*		E38
PAQZZ	5920-189-0853	FUSE FU-41 FUI 50 AMP 1-1/4 IN LG X 7/32 IN DIA O/A TYPE 4AG 1342 (75915)	EA	1	*	*	*	*		FU1
PAQZZ	5920-189-0853	FUSE FU-41 F1 50 AMP 1-1/4 IN LG X 9/32 IN.. DIA O/A TYPE 4AG 1342 (75915)	EA	2	*	*	*	*	22	F1
PAQZZ	5920-131-9910	FUSE FU-32 FJ3 1/2 AMP, 3 IN LG X 13/32 IN.. DIA O/A 621500 (75915)	EA	1	*	*	*	*	15	FU3
PAQZZ	5920-012-0151	FUSE, CARTRIDGE FU2 1-1/4 IN LG X 1/4 IN DIA O/A 15A (75915)	EA	1	*	*	*	*		FU2
PAQZZ	5920-012-0151	FUSE, CARTRIDGE F2 15 AMP 1-1/4 IN LG X.. 1/4 IN DIA O/A 15A (75915)	EA	2	*	*	*	*	23	F2
PAQZZ	5355-160-6096	KNOR 0104 WHITE LINE 5/8 IN H X 3/4 IN WD.. 1-1/4 IN O/A S292-11 (75376)	EA	3	*	*	*	*		C104
PAQZZ	5355-160-6096	KNOR 0105 WHITE LINE 5/8 IN H X 3/4 IN WD.. 1-1/4 IN O/A S292-11 (75376)	EA	2	*	*	*	*		C105
PAQZZ	5355-160-6096	KNOR 0106 WHITE LINE 5/8 IN H X 3/4 IN WD.. 1-1/4 IN O/A S292-11 (75376)	EA	2	*	*	*	*		C106
PAQZZ	5355-162-9110	KNOR 0101 BLK PHENOLIC ACCOM 1/4 IN SHAFT.. WHITE DOT MARKING 1-5/8 IN DIA X 3/4 IN H O/A SCR43608 (80063)	EA	3	*	*	*	*		C101
PAQZZ	5355-162-9110	KNOR 0102 BLK PHENOLIC ACCOM 1/4 IN SHAFT.. WHITE DOT MARKING 1-5/8 IN DIA X 3/4 IN H O/A SCR43608 (80063)	EA	2	*	*	*	*		C102
PAQZZ	5355-162-9110	KNOR 0103 BLK PHENOLIC ACCOM 1/4 IN SHAFT.. WHITE DOT MARKING 1-5/8 IN DIA X 3/4 IN H O/A SCR43608 (80063)	EA	2	*	*	*	*		C103
PAQZZ	5355-161-1171	KNOR NO-REF-DESIG RD BLACK SAKELITE FOR 1/4.. IN DIA SHAFT 9/16 IN DIA X 5/16 IN H O/A A11118-2 (76149)	EA	9	*	*	*	*		
PAQZZ		CABLE ASSEMBLY, POWER, ELECTRICAL NO-REF-DESIG CORD CD-954 36 IN LG C0954 (80058)	EA	1	*	*	*	*		1
PAQZZ		CABLE ASSEMBLY, POWER, ELECTRICAL NO-REF-DESIG CORD CO-955 36 IN LG C0955 (80058)	EA	1	*	*	*	*		1
PAQZZ		CABLE ASSEMBLY, POWER, ELECTRICAL NO-REF-DESIG CORD CO-999 6 FT 4 IN LG EXCLUDING TERM C0999 (80063)	EA	1	*	*	*	*		1

AMC FORM 11-6625-799-24P

ORGANIZATIONAL REPAIR PARTS TOOL LIST

SECTION V

TM 11-6625-799-24P

(1) SMR CODE	(2) FEDERAL STOCK NUMBER	(3) DESCRIPTION REFERENCE NUMBER & MFR. CODE USABLE UN CODE		(4) UNIT OF MEAS	(5) QTY INC IN UNIT	(6) 30-DAY DS MAINT ALLOWANCE			(7) 30-DAY GS MAINT ALLOWANCE			(8) 1-YR ALW PER 100 EQUIP CNTGCT	(9) DEPOT MAINT ALW PER 100 EQUIP	(10) ILLUSTRATION	
						(a)	(b)	(c)	(a)	(b)	(c)			(a)	(b)
						1-20	21-50	51-100	1-20	21-50	51-100			FIGURE NO.	ITEM NO.
PAOZZ	6145-849-9758	CABLE, POWER, ELECTRICAL NO-REF-DESIG... CORDAGE CO-134 2 NO. 10 AWG AND 2 NO. 14 AWG COPPER STRANDED COND, (3 FT LONG) SCC18899 (80063)		EA	1	*	*	*	*	*	*		10		
PAOZZ	6145-635-3740	CABLE, POWER, ELECTRICAL NO-REF-DESIG 2 NO. 8 AWG COPPER STRANDED COND, (3 FT LONG) 71-4945 (81351)		EA	1	*	*	*	*	*	*		10		
PAOZZ	6145-548-1255	CABLE, POWER, ELECTRICAL NO-REF-DESIG 6 STRD NO. 18 AWG COPPER 41 STRD NO. 34 AWG (3 FT LONG) CO-06LGF6-18SJ04* 20 (96906)		EA	1	*	*	*	*	*	*		10		
PAOZZ	5920-568-5866	CAP, ELECTRICAL NO-REF-DESIG..... 9326-1-2 (71400)		EA	2	*	*	*	*	*	*		3		
PAOZZ	5920-244-5150	CAP, ELECTRICAL NO-REF-DESIG..... 9435-1-2 (10133)		EA	2	*	*	*	*	*	*		3		
PAHZZ	5910-160-2264	CAPACITOR, FIXED, PAPER DIELECTRIC 1 UF PORN10%, 2000 VDCW CP70E1FJ105K (81350)		C1.	EA	1	*	*	*	*	*		3	15	C1
PAHZZ	5910-543-0128	CAPACITOR, FIXED, PAPER DIELECTRIC 4 UF P20% M10% 2000 VDCW CP70E1FJ405V (81350)		C2.	EA	1	*	*	*	*	*		3	15	C2
PAOZZ	5940-260-0447	CLIP, ELECTRICAL 0301 ALLIGATOR 1-1/4. IN MAX JAW OPENING SCD11580-5 (80063)		EA	2	*	*	*	*	*	*		3		C301
PAOZZ	5940-260-3447	CLIP, ELECTRICAL 0302 ALLIGATOR 1-1/4. IN MAX JAW OPENING SCD11580-5 (80063)		EA	REF	*	*	*	*	*	*				C302
PAOZZ	5920-852-9086	CLIP, ELECTRICAL E35 FERRULE STYLE ... 3/4 IN LG X 1/2 IN WD X 7/16 IN H 125001 (75915)		EA	4	*	*	*	*	*	*		3		E35
PAOZZ	5720-852-9086	CLIP, ELECTRICAL E36 FERRULE STYLE ... 3/4 IN LG X 1/2 IN WD X 7/16 IN H 125001 (75915)		EA	REF	*	*	*	*	*	*				E36
PAOZZ	5920-852-9086	CLIP, ELECTRICAL E37 FERRULE STYLE ... 3/4 IN LG X 1/2 IN WD X 7/16 IN H 125001 (75915)		EA	REF	*	*	*	*	*	*				E37
PAOZZ	5920-852-9086	CLIP, ELECTRICAL E38 FERRULE STYLE ... 3/4 IN LG X 1/2 IN WD X 7/16 IN H 125001 (75915)		EA	REF	*	*	*	*	*	*				E38
PAHZZ	5935-149-2827	CONNECTOR, PLUG P101 18 KNIFE SW TYPE... CONT POL STRAIGHT TYPE P318CCT (71785)		EA	1	*	*	*	*	*	*		3		P101
PAHZZ	5935-537-4363	CONNECTOR ASSEMBLY P201 8 MALE KNIFE SW TYPE CONT POL STRAIGHT TYPE P408CCT (71785)		EA	1	*	*	*	*	*	*		4		P201
PAOZZ	5920-189-0853	FUSE FU-41 F1 50 AMP 1-1/4 IN LG X... 9/32 IN DIA O/A TYPE 4AG 1342 (75915)		EA	1	*	*	*	*	*	*		50		FU1
PAOZZ	5920-189-0853	FUSE FU-41 F1 50 AMP 1-1/4 IN LG... X9/32 IN DIA O/A TYPE 4AG 1342 (75915)		EA	REF	*	*	*	*	*	*		50	22	F1

SECTION V

TM 11-6625-799-24P

(1) SMR CODE	(2) FEDERAL STOCK NUMBER	(3) DESCRIPTION REFERENCE NUMBER & MFR. CODE USABLE ON CODE	(4) UNIT OF MEAS	(5) QTY INC IN UNIT	(6) 30-DAY DS MAINT ALLOWANCE			(7) 30-DAY GS MAINT ALLOWANCE			(8) 1-YR ALW PER 100 EQUIP CNTGCT	(9) DEPOT MAINT ALW PER 100 EQUIP	(10) ILLUSTRATION	
					(a)	(b)	(c)	(a)	(b)	(c)			(a)	(b)
					1-20	21-50	51-100	1-20	21-50	51-100			FIGURE NO.	ITEM NO.
PA0ZZ	5920-131-9910	FUSE FU-12 FU3 1/2 AMP, 3 IN LG X 13/32 IN DIA O/A 621500 (75915) ANB	EA	1	*	*	*	*	*	*		50	15	FU3
PAHZZ	5920-131-9910	FUSE FU-12 F3 1/2 AMP, 3 IN LG X..... 13/32 IN DIA O/A 621500 (75915) ANC	EA	REF				*	*	*		50	19	F3
PAJZZ	5920-012-0151	FUSE, CARTRIDGE FU2 1-1/4 IN LG X 1/4. IN DIA O/A 15A (75915) ANB	EA	1	*	*	*	*	*	*		50		FU2
PA0ZZ	5920-012-0151	FUSE, CARTRIDGE F2 15 AMP 1-1/4 IN.. LG X 1/4 IN DIA O/A 15A (75915) ANC	EA	REF	*	*	*	*	*	*		50	23	F2
PAHZZ	5920-284-6800	FUSEHOLDER FH1 FUSE POST FU-39 EXTRACTOR POST TYPE FOR 50 AMP, 25 V FUSE 2-1/4 IN LG X 3/4 IN DIA O/A HCMQLR4AG (10133) ANC	FA	2				*	*	*		3		FH1
PAHZZ	5920-284-6800	FUSEHOLDER XF1 FUSE POST FU-37 EXTRACTOR POST TYPE FOR 50 AMP, 25 V FUSE 2-1/4 IN LG X 3/4 IN DIA O/A (XF1 REF SYM USED W/ ORDER NO 6866-PH-51-04) HCMQLR4AG (10133) ANC	EA	REF				*	*	*		3		XF1
PAHZZ	5920-285-0755	FUSEHOLDER FH2 EXTRACTOR POST TYPE ... 240 V 15 AMP 2-9/64 IN LG X 11/16 IN DIA O/A HKPQLR (10133) ANC	EA	2				*	*	*		3		FH2
PAHZZ	5920-285-0755	FUSEHOLDER XF2 EXTRACTOR POST TYPE ... 240 V 15 AMP 2-9/64 IN LG X 1-1/16 IN DIA O/A HKPQLR (10133) ANC	EA	REF				*	*	*		3		XF2
PAHZZ	5920-280-4254	FUSEHOLDER FH3 CLIP TYPE FOR 1/2 AMP, 1000 V FUSE 3-3/4 IN LG X . IN WD X 1/4 IN THK SCB43630 (80063) ANC	EA	2				*	*	*		3		FH3
PAHZZ	5920-280-4254	FUSEHOLDER XF3 LIP TYPE FOR 1 AMP.. 1000 V FUSE 3-3/4 IN LG X 1 IN WD X 1/4 IN THK (XF3 REF SYM USED W/ORDER NO. 6866-PH-51-04) SCB43630 (80063) ANC	EA	REF				*	*	*		3		XF3
PAHZZ	5325-141-7216	GROMMET, RUBBER MP7 5/8 IN OD FL X 1/2.. IN OD GROOVE X 3/32 IN THK FL X 3/8 IN DIA HOLE X 1/4 IN THK O/A X 1/16 IN WD GROOVE 230 (70485) ANC	EA	2				*	*	*		4	14	MP7
PAHZZ	5325-141-7216	GROMMET, RUBBER MP9 5/8 IN OD FL X 1/2 IN OD GROOVE X 3/32 IN THK FL X 3/8 IN DIA HOLE X 1/4 IN THK O/A X 1/16 IN WD GROOVE 230 (70485) ANC	EA	REF				*	*	*			14	MP8
PAHZZ	5940-405-8496	INSULATOR, PLATE NO-REF-DESIG..... RECTANGULAR SHAPE TYPE LTS-E-2, BLACK PLASTIC 2 IN LG X 1-9/16 IN WD X 9/16 IN THK O/A	EA	1				*	*	*		3		
PAHZZ	5970-242-7762	INSULATOR, WASHER E17 MICA 1 IN DIA X CONTINUED	EA	8				*	*	*		1		F17

SECTION V

TM 11-6625-799-24P

(1) SMR CODE	(2) FEDERAL STOCK NUMBER	(3) DESCRIPTOR REFERENCE NUMBER & MFR. CODE USABLE ON CODE	(4) UNIT OF MEAS	(5) QTY INC OR UNIT	(6) 30-DAY GS MAINT ALLOWANCE			(7) 30-DAY GS MAINT ALLOWANCE			(8) 1-YR ALW PER 100 EQUIP CATGCT	(9) DEPOT ALW PER 100 EQUIP	(10) ILLUSTRATION	
					(a)	(b)	(c)	(a)	(b)	(c)			(a)	(b)
					1-20	21-50	51-100	1-20	21-50	51-100			FIGURE NO.	ITEM NO.
PA022	5355-160-6096	KN08 0104 WHITE LINE 5/8 IN H X 3/4 IN WD 1-1/4 IN O/A S292-11 (75376)	EA	3	*	*	*	*	*	*	3		0104	
PA022	5355-160-6096	KN08 0135 WHITE LINE 5/8 IN H X 3/4 IN WD 1-1/4 IN O/A S292-11 (75376)	EA	REF	*	*	*	*	*	*			0135	
PA022	5355-160-6096	KN08 0106 WHITE LINE 5/8 IN H X 3/4 IN WD 1-1/4 IN O/A S292-11 (75376)	EA	REF	*	*	*	*	*	*			0136	
PA022	5355-162-9110	KN08 0101 BLK PHENOLIC ACCOM 1/4 IN... SHAFT WHITE DOT MARKING 1-5/8 IN DIA X 3/4 IN H O/A SCB43608 (80063)	EA	3	*	*	*	*	*	*	3		0101	
PA022	5355-162-9110	KN08 0102 BLK PHENOLIC ACCOM 1/4 IN... SHAFT, WHITE DOT MARKING 1-5/8 IN DIA X 3/4 IN H O/A SCB-3608 (80063)	EA	REF	*	*	*	*	*	*			0102	
PA022	5355-162-9110	KN08 0103 BLK PHENOLIC ACCOM 1/4 IN... SHAFT, WHITE DOT MARKING 1-5/8 IN DIA X 3/4 IN H O/A SCB43608 (80063)	EA	REF	*	*	*	*	*	*			0103	
PA022	5355-161-1171	KN08 NO-REF-DESIG RD BLACK BAKELITE ... FOR 1/4 IN DIA SHAFT 9/16 IN DIA X 5/16 IN H O/A A11118-2 (76149)	EA	9	*	*	*	*	*	*	3			
PAH22	6625-235-4766	METER, ARBITRARY SCALE M1 DC INPUT... DC VOLTAGE RANGE 0/30/60, INPUT AC VOLTAGE (RIPPLE) RANGE 0/0.3/3, INPUT DC AMP RANGE 0/12/30/60, OUTPUT DC VOLTAGE RANGE 0/30/1200	EA	2				*	*	*	3	15	M1	
PAH22	6625-235-4766	METER, ARBITRARY SCALE M2 DC INPUT... DC VOLTAGE RANGE 0/30/60, INPUT AC VOLTAGE (RIPPLE) RANGE 0/0.3/3, INPUT DC AMP RANGE 0/12/30/60, OUTPUT DC VOLTAGE RANGE 0/300/1200	EA	REF				*	*	*		15	M2	
PAH22	5920-636-0128	PANEL, FUSE A1 HOLDS FUSE CLIPS 3... 3/4 IN LG X 1 IN WD X 1/2 IN H SCB43631 (80063)	EA	1				*	*	*	3		A1	
PAH22	6625-510-1638	PANEL, MOUNTING A2 FOR MOUNTING SHUNT ASSY PLASTIC 6-1/4 IN LG X 2-1/4 IN WD X 3/16 IN THK SCB 3618 (80063)	EA	1				*	*	*	3		A2	
PAH22	5940-537-6591	POST BINDING NO-REF-DESIG..... 45 (00629)	EA	8				*	*	*	3		E18	
PAH22	6130-348-0854	RECTIFIER METALLIC REF1 COPPER OXIDE... TYPE INPUT 10 V AC OUTPUT 8 V DC 5 MA 0.690 IN LG X 1/4 IN WD X 0.375 IN H O/A B160 (73602)	EA	2				*	*	*	3	15	RE1	

SECTION V

TM 11-6625-799-24P

(1) SMR CODE	(2) FEDERAL STOCK NUMBER	DESCRIPTION REFERENCE NUMBER & MFR. CODE USABLE ON CODE	(4) UNIT OF MEAS	(5) QTY INC IN UNIT	(6) 30-DAY GS MAINT ALLOWANCE			(7) 30-DAY GS MAINT ALLOWANCE			(8) 1-YR ALW PER 100 EQUIP CHNGY	(9) DEPOT MAINT ALW PER 100 EQUIP	(10) ILLUSTRATION	
					(a)	(b)	(c)	(a)	(b)	(c)			(a)	(b)
					1-20	21-50	51-100	1-20	21-50	51-100			FIGURE NO.	ITEM NO.
PAHZZ	6130-548-0854	RECTIFIER METALLIC RE2 COPPER OXIDE... TYPE INPUT 10 V AC OUTPUT 3 V DC 5 MA 0.690 IN LG X 1/4 IN WD X 0.375 IN H O/A B160 (73602) ANB	EA	REF				*	*	*			15	RE2
PAHZZ	6130-548-0854	RECTIFIER METALLIC CR1 COPPER OXIDE... TYPE INPUT 10 V AC OUTPUT 8 V DC 5 MA 0.690 IN LG X 1/4 IN WD X 0.375 IN H O/A B160 (73602) ANB	EA	REF				*	*	*		3	17	CR1
PAHZZ	6130-548-0854	RECTIFIER METALLIC CR2 COPPER OXIDE... TYPE INPUT 10 V AC OUTPUT 8 V DC 5 MA 0.690 IN LG X 1/4 IN WD X 0.375 IN H O/A B160 (73602) ANB	EA	REF				*	*	*			17	CR2
PAHZZ	5905-405-6287	RESISTOR ASSEMBLY R2 (SEE FIGURE 15) 4 FIXED WW RESISTORS 0.0005 OHM PORM1%, 1W 0.0005 OHM PORM1%, 4W 0.0075 OHM PORM1%, 1/2 W 0.00025 OHM PORM1%, 1 W C1S1 (71440) ANB	EA	4				*	*	*		3	22	R2
PAHZZ	5905-405-6287	RESISTOR ASSEMBLY R3 (SEE FIGURE 15) 4 FIXED WW RESISTORS 0.0005 OHM PORM1%, 1W 0.0005 OHM PORM1%, 4W 0.0075 OHM PORM1%, 1/2 W 0.00025 OHM PORM1%, 1 W C1S1 (71440) ANB	EA	REF				*	*	*			22	R3
PAHZZ	5905-405-6287	RESISTOR ASSEMBLY R4 (SEE FIGURE 15) 4 FIXED WW RESISTORS 0.0005 OHM PORM1%, 1W 0.0005 OHM PORM1%, 4W 0.0075 OHM PORM1%, 1/2 W 0.00025 OHM PORM1%, 1 W C1S1 (71440) ANB	EA	REF				*	*	*			22	R4
PAHZZ	5905-405-6287	RESISTOR ASSEMBLY R5 (SEE FIGURE 15) 4 FIXED WW RESISTORS 0.0005 OHM PORM1%, 1W 0.0005 OHM PORM1%, 4W 0.0075 OHM PORM1%, 1/2 W 0.00025 OHM PORM1%, 1 W C1S1 (71440) ANB	EA	REF				*	*	*			22	R5
PAHZZ	5905-279-5689	RESISTOR, FIXED, WIRE WOUND R21 0.05... OHM PORM1% 1 W 1 IN LG X 1/2 IN DIA AKRAOHM193 (54294) ANB	EA	1				*	*	*		3	17	R21
PAHZZ	5905-549-9200	RESISTOR, FIXED, WIRE WOUND R22 0.202... OHM PORM1% 1/2 W 1 IN LG X 1/2 IN DIA 1935 (54274) ANB	EA	1				*	*	*		3	17	R22
PAHZZ	5905-642-2779	RESISTOR, FIXED, WIRE WOUND R6 2 OHM... PORM5% 30 W RW34V2R0 (81349) ANB	EA	1				*	*	*		3	15	R6
PAHZZ	5905-552-7204	RESISTOR, FIXED, COMPOSITION R19 900... OHM PORM1% 1/2 W 11/16 IN LG X 0.226 IN DIA CPI-2-1 (96095) ANB	EA	1				*	*	*		3	17	R19
PAHZZ	5905-642-1962	RESISTOR, FIXED, WIRE WOUND R30 1000... OHM PORM5%, 110 W RW38V102 (81350) ANB	EA	2				*	*	*		3	14	R30
PAHZZ	5905-642-1962	RESISTOR, FIXED, WIRE WOUND R31 1000... OHM PORM5% 110 W RW38V102 (81350) ANB	EA	REF				*	*	*			14	R31
PAHZZ	5905-199-2383	RESISTOR, FIXED, WIRE WOUND R32 1000... OHM PORM5% 110 W RW38V102 (81350) ANB	EA	2				*	*	*		3	18	R30

SECTION V

TM 11-6625-799-24P

(1) SMR CODE	(2) FEDERAL STOCK NUMBER	(3) DESCRIPTION REFERENCE NUMBER & MFR. CODE USABLE ON CODE		(4) UNIT OF MEAS	(5) QTY INC IN UNIT	(6) 30-DAY DS MAINT ALLOWANCE			(7) 30-DAY GS MAINT ALLOWANCE			(8) 1-YR ALW PER 100 EQUIP CHTGET	(9) DEPOT MAINT ALW PER 100 EQUIP	(10) ILLUSTRATION		
						(a)	(b)	(c)	(a)	(b)	(c)			(a)	(b)	
						1-20	21-50	51-100	1-20	21-50	51-100			FIGURE NO.	ITEM NO.	
		CONTINUED														
PAHZZ	5905-199-2383	OHM PORM5% 166 W 1 IN LG X 1/2 IN DIA RW39G102 (81350) ANC		EA	REF				*	*	*			18	R31	
		RESISTOR, FIXED, WIRE WOUND R31 1900..														
PAHZZ	5905-549-3250	OHM PORM5% 166 W RW39G102 (81350) ANC		EA	1				*	*	*		3	17	R16	
		RESISTOR, FIXED, FILM R16 2000 OHM.....														
PAHZZ	5905-196-2733	PORM1R 1 W RN25X2001F (81349)		EA	2				*	*	*		3	14	R27	
		RESISTOR, FIXED, WIRE WOUND R27 2000..														
PAHZZ	5905-196-2733	OHM PORM5% 38 W RW35F202 (81350) ANB		EA	REF				*	*	*			14	R28	
		RESISTOR, FIXED, WIRE WOUND R28 2000..														
PAHZZ	5905-284-3190	OHM PORM5% 38 W RW35F200 (81350) ANB		EA	1				*	*	*		3	18	R29	
		RESISTOR, FIXED, WIRE WOUND R29 2000..														
PAHZZ	5905-577-0806	OHM PORM5% 110 W RW38G202 (81350) ANC		EA	1				*	*	*		3	14	R29	
		RESISTOR, FIXED, WIRE WOUND R29 2000..														
PAHZZ	5905-174-2725	OHM PORM5% 78 W RW37G202 (81350) ANB		EA	2				*	*	*		3	18	R27	
		RESISTOR, FIXED, WIPE WOUND R27 2000..														
PAHZZ	5905-174-2725	OHM PORM5% 60 W RW36G202 (81350) ANC		EA	REF				*	*	*			18	R28	
		RESISTOR, FIXED, WIRE WOUND R28 2000..														
PAHZZ	5905-264-9243	OHM PORM5% 50 W RW36G202 (81350) ANC		EA	3				*	*	*		3	18	R24	
		RESISTOR, FIXED, WIRE WOUND R24 2000..														
PAHZZ	5905-264-9243	OHM PORM5% 30 W RW34G202 (81350)		EA	REF				*	*	*			18	R25	
		RESISTOR, FIXED, WIRE WOUND R25 2000..														
PAHZZ	5905-264-9243	OHM PORM5% 30 W RW34G202 (81350)		EA	REF				*	*	*			18	R26	
		RESISTOR, FIXED, WIRE WOUND R26 2000..														
PAHZZ	5905-752-3164	OHM PORM5% 30 W RW34G202 (81350)		EA	1				*	*	*		3	17	R20	
		RESISTOR, FIXED, COMPOSITION R20 2700.														
PAHZZ	5905-222-4323	OHMS PORM1R 1/2 W 11/16 IN LG X 0.226 IN DIA CP1-2-2700 (96095)		EA	2				*	*	*		3	16	R10	
		RESISTOR, FIXED, COMPOSITION R10 7900.														
PAHZZ	5905-222-4323	OHM PORM1R, 1/2 W, 11/16 IN LG X 0.266 IN DIA (82000 OHM) CP1-2-1 (96095) ANB		EA	REF				*	*	*			16	R11	
		RESISTOR, FIXED, COMPOSITION R11 7000.														
PAHZZ	5905-539-5653	OHM PORM1R 1/2 W 11/16 IN LG X 0.266 IN DIA (82000 OHM) CP1-2-1 (96095)		EA	1				*	*	*		3	17	R11	
		RESISTOR, FIXED, COMPOSITION R11 7000.														
PAHZZ	5905-556-4623	OHM PORM1R 1/2 W RN25X7001F (81349) ANB		EA	1				*	*	*		3	16	R15	
		RESISTOR, FIXED, COMPOSITION R15 8000.														
		OHM PORM1R 1/2 W RW70B7178P ANB														

SECTION V

TM 11-6625-799-24P

(1) SMR CODE	(2) FEDERAL STOCK NUMBER	(3) DESCRIPTION REFERENCE NUMBER & MFR. CODE USABLE ON CODE		(4) UNIT OF MEAS	(5) QT / INC IN UNIT	(6) 30-DAY GS MAINT ALLOWANCE			(7) 30-DAY GS MAINT ALLOWANCE			(8) 1-YR ALW PER 100 EQUIP CNTCY	(9) DEPOT MAINT ALW PER 100 EQUIP	(10) ILLUSTRATION	
						(a)	(b)	(c)	(a)	(b)	(c)			(a)	(b)
						1-20	21-50	51-100	1-20	21-50	51-100			FIGURE NO.	ITEM NO.
PAHZZ	5905-542-9315	RESISTOR, FIXED, FILM R8 24000 OHM... PORM1% 1/2 W CPI-2-1A (96095) ANC	EA	1				*	*	*		3	17	R8	
PAHZZ	5905-263-2993	RESISTOR, FIXED, COMPOSITION R9 26000 OHM PORM1%, 1/2 W 11/16 IN LG X 0.266 IN DIA CPI-2-1 (96095) ANB	EA	1				*	*	*		3	16	R9	
PAHZZ	5905-556-3783	RESISTOR, FIXED, COMPOSITION R12 30000 OHM PORM1% 1/2 W 5/8 IN LG X 0.203 IN DIA CPS1-2 (96095) ANB	EA	2				*	*	*		3	16	R12	
PAHZZ	5905-556-3783	RESISTOR, FIXED, COMPOSITION R13 30000 OHM PORM1% 1/2 W 5/8 IN LG X 0.203 IN DIA CPS1-2 (96095) ANB	EA	REF				*	*	*			16	R13	
PAHZZ	5905-114-5489	RESISTOR, FIXED, COMPOSITION R8 82000 OHM PORM1% 1/2 W RC20GF823J (81349) ANB	EA	1				*	*	*		3	16	R8	
PAHZZ	5905-114-5489	RESISTOR, FIXED, COMPOSITION R10 82000 OHM PORM1% 1/2 W RC20GF823J (ZZZ...) ANB	EA	REF				*	*	*		3	17	R10	
PAHZZ	5905-552-2442	RESISTOR, FIXED, COMPOSITION R14..... 100000 OHM PORM1% 1/2 W 15/16 IN LG X 0.266 IN DIA CPI-2-100K (96095) ANB	EA	1				*	*	*		3	17	R14	
PAHZZ	5905-542-8435	RESISTOR, FIXED, COMPOSITION R18..... 300000 OHM PORM1%, 1 W 7/8 IN LG X 0.325 IN DIA CPI-300K (96095) ANB	EA	1				*	*	*		3	17	R18	
PAHZZ	5905-251-5028	RESISTOR, FIXED, COMPOSITION R17..... 900000 OHM PORM1% 2 W 2 IN LG X 0.325 IN DIA CP2-900K (96095) ANB	EA	1				*	*	*		3	17	R17	
PAHZZ	5905-502-8927	RESISTOR, FIXED, COMPOSITION R23 2 MEG PORM1% 1 W 7/8 IN LG X 0.325 IN DIA CPI-1 (96095) ANB	EA	1				*	*	*		3	16	R23	
PAHZZ	5905-666-3048	RESISTOR, FIXED, COMPOSITION R23 MEG PORM1% 1 W RC32GF225K (81350) ANB	EA	1				*	*	*		3	17	R23	
PAHZZ	5905-229-0301	RESISTOR, VARIABLE R1 MW 5 OHM..... PORM10% 150 W RP301FK5R0KK (81350) ANB	EA	1				*	*	*		3	14	R1	
PAHZZ	5905-221-8056	RESISTOR, VARIABLE R7 WW 6 OHM..... PORM10% 50 W RP151FK6R0KK (81350) ANB	EA	1				*	*	*		3	15	R7	
PAHZZ	5905-228-3952	RESISTOR, VARIABLE R32 WW 2500 OHM... PORM10% RP301FK252KK (81350) ANB	EA	1				*	*	*		3	18	R32	

SECTION V

TM 11-6625-799-24P

(1) SMR CODE	(2) FEDERAL STOCK NUMBER	(3) DESCRIPTION REFERENCE NUMBER & MFR. CODE USABLE ON CODE	(4) UNIT OF MEAS	(5) QTY INC IN UNIT	(6) 30-DAY DS MAINT ALLOWANCE			(7) 30-DAY GS MAINT ALLOWANCE			(8) 1-YR ALW PER 100 EQUIP CNTGCT	(9) DEPOT MAINT ALW PER 100 EQUIP	(10) ILLUSTRATION	
					(a)	(b)	(c)	(a)	(b)	(c)			(a)	(b)
					1-20	21-50	51-100	1-20	21-50	51-100			FIGURE NO.	ITEM NO.
PAHZZ	6625-510-4679	SHUNT, INSTRUMENT, MULTIRANGE R2 30.. MV DRP 0 TO 3/12/30/60 AMP RANGES 5-1/4 IN LG X 1-3/4 IN WD X 3/8 IN H VG3044 (92058) ANC	EA	4				*	*	*		3	22	R2
PAHZZ	6625-510-4679	SHUNT, INSTRUMENT, MULTIRANGE R3 30 MV.. DRP 0 TO 3/12/30/60 AMP RANGES 5-1/4 IN LG X 1-3/4 IN WD X 3/8 IN H VG3044 (92058) ANC	EA	REF				*	*	*		3	22	R3
PAHZZ	6625-510-4679	SHUNT, INSTRUMENT, MULTIRANGE R4 30 MV.. DRP 0 TO 3/12/30/60 AMP RANGES 5-1/4 IN LG X 1-3/4 IN WD X 3/8 IN H VG3044 (92058) ANC	EA	REF				*	*	*		3	22	R4
PAHZZ	6625-510-4679	SHUNT, INSTRUMENT, MULTIRANGE R5 30 MV.. DRP 0 TO 3/12/30/60 AMP RANGES 5-1/4 IN LG X 1-3/4 IN WD X 3/8 IN H VG3044 (92058) ANC	EA	REF				*	*	*		3	22	R5
PAHZZ	5930-548-5394	SWITCH, PUSH SW6 1C CONT ARRANGEMENT . 125 V AC, 0.75 AMP FOR NOM LOAD 1-11/16 IN LG X 1 IN WD X 3/4 IN H EXCLUDING TERM AND ACTUATOR 2003 (37942) ANB	EA	9				*	*	*		5	16	SW6
PAHZZ	5930-548-5394	SWITCH, PUSH SW7 1C CONT ARRANGEMENT . 125 V AC, 0.75 AMP FOR NOM LOAD 1-11/16 IN LG X 1 IN WD X 3/4 IN H EXCLUDING TERM AND ACTUATOR 2003 (37942) ANB	EA	REF				*	*	*			16	SW7
PAHZZ	5930-548-5394	SWITCH, PUSH SW8 1C CONT ARRANGEMENT . 125 V AC, 0.75 AMP FOR NOM LOAD 1-11/16 IN LG X 1 IN WD X 3/4 IN H EXCLUDING TERM AND ACTUATOR 2003 (37942) ANB	EA	REF				*	*	*			22	SW8
PAHZZ	5930-548-5394	SWITCH, PUSH SW9 1C CONT ARRANGEMENT . 125 V AC, 0.75 AMP FOR NOM LOAD 1-11/16 IN LG X 1 IN WD X 3/4 IN H EXCLUDING TERM AND ACTUATOR 2003 (37942) ANB	EA	REF				*	*	*			16	SW9
PAHZZ	5930-548-5394	SWITCH, PUSH SW11 1C CONT ARRANGEMENT . 125 V AC, 0.75 AMP FOR NOM LOAD 1-11/16 IN LG X 1 IN WD X 3/4 IN H EXCLUDING TERM AND ACTUATOR 2003 (37942) ANB	EA	REF				*	*	*			16	SW11
PAHZZ	5930-548-5394	SWITCH, PUSH SW12 1C CONT ARRANGEMENT . 125 V AC, 0.75 AMP FOR NOM LOAD 1-11/16 IN LG X 1 IN WD X 3/4 IN H EXCLUDING TERM AND ACTUATOR 2003 (37942) ANB	EA	REF				*	*	*			16	SW12
PAHZZ	5930-548-5394	SWITCH, PUSH SW13 1C CONT ARRANGEMENT . 125 V AC, 0.75 AMP FOR NOM LOAD 1-11/16 IN LG X 1 IN WD X 3/4 IN H EXCLUDING TERM AND ACTUATOR 2003 (37942) ANB	EA	REF				*	*	*			16	SW13
PAHZZ	5930-548-5394	SWITCH, PUSH SW14 1C CONT ARRANGEMENT . 2003 (37942) ANB	EA	REF				*	*	*			15	SW14

CONTINUED

SECTION V

TM 11-6625-799-24P

(1) SMR CODE	(2) FEDERAL STOCK NUMBER	(3) DESCRIPTION REFERENCE NUMBER & MFR. CODE USABLE ON CODE		(4) UNIT OF MEAS	(5) QTY INC IN UNIT	(6) 30-DAY DS MAINT ALLOWANCE			(7) 30-DAY GS MAINT ALLOWANCE			(8) 1-YR ALW PER 100 EQUIP CNTGCTY	(9) DEPOT MAINT ALW PER 100 EQUIP	(10) ILLUSTRATION	
						(a)	(b)	(c)	(a)	(b)	(c)			(a)	(b)
						1-20	21-50	51-100	1-20	21-50	51-100			FIGURE NO.	ITEM NO.
PAHZZ	5930-265-6296	125 V AC 0.75 AMP FOR NON LOAD 1-11/16 IN LG X 1 IN WD X 3/4 IN H EXCLUDING TERM AND ACTUATOR 2003 (37942) ANB		EA	1				*	*	*		5	16	SW10
PAHZZ	5930-376-9938	SWITCH, PUSH SW10 CONT ARRANGEMENT 2... FORM C 115 V AC, 1 AMP FOR NON LOAD 1- 23/32 IN LG X 27/32 IN H X 2-1/8 IN WD D/A 2006 (37942) ANB		EA	2				*	*	*		5	20	S6
PAHZZ	5930-376-9938	SWITCH, PUSH S6 CONT ARRANGEMENT 2... FORM C 24 V DC, 20 AMP 1-11/16 IN LG X 3/4 IN WD X 1-1/8 IN D 1060 (82389) ANB		EA	REF				*	*	*			20	S7
PAHZZ	5930-376-9939	SWITCH, PUSH S7 CONT ARRANGEMENT 2... FORM C 24 V DC 20 AMP 1-11/16 IN LG X 3/4 IN WD X 1-1/8 IN D 1060 (82389) ANB		EA	3				*	*	*		5	20	S8
PAHZZ	5930-376-9939	SWITCH, PUSH S8 CONT ARRANGEMENT 2... FORM C 115 V AC, 3 AMP 1-11/16 IN LG X 3/4 IN WD X 7/8 IN D 1061 (82389) ANB		EA	REF				*	*	*			22	S11
PAHZZ	5930-376-9939	SWITCH, PUSH S11 CONT ARRANGEMENT 2... FORM C, 115 V AC, 3 AMP 1-11/16 IN LG X 3/4 IN WD X 7/8 IN DIA 1061 (82389) ANB		EA	REF				*	*	*			20	S13
PAHZZ	5930-376-9940	SWITCH, PUSH S13 CONT ARRANGEMENT 2... FORM C 115 V AC 3 AMP 1-11/16 IN LG X 3/4 IN WD X 7/8 IN D 1061 (82389) ANB		EA	3				*	*	*		5	22	S9
PAHZZ	5930-376-9940	SWITCH, PUSH S9 CONT ARRANGEMENT 2... FORM A 115 V DC, 3 AMP 1-11/16 IN LG X 3/4 IN WD X 7/8 IN D 1062 (82389) ANB		EA	REF				*	*	*			22	S12
PAHZZ	5930-376-9940	SWITCH, PUSH S12 CONT ARRANGEMENT 2... FORM A 115 V DC, 3 AMP 1-11/16 IN LG X 3/4 IN WD X 7/8 IN D 1062 (82389) ANB		EA	REF				*	*	*			20	S14
PAHZZ	5930-376-9940	SWITCH, PUSH S14 CONT ARRANGEMENT 2... FORM A 115 V DC, 3 AMP 1-11/16 IN LG X 3/4 IN WD X 7/8 IN D 1062 (82389) ANB		EA	REF				*	*	*			20	S14
PAHZZ	5930-376-9941	SWITCH, PUSH S10 CONT ARRANGEMENT 1... FORM A AND 1 FORM B 115 V AC, 3 AMP 1- 11/16 IN LG X 3/4 IN WD X 1-1/8 IN D 1063 (82389) ANB		EA	1				*	*	*		5	20	S10
PAHZZ	5930-263-7846	SWITCH, ROTARY SW3 2 POLES, 3 THROWS... 3 POSITION, 6 V, 1 AMP 7/8 IN LG X 1-5/8 IN WD X 1-7/8 IN H CRL7121 (71590) ANB		EA	2				*	*	*		5	15	SW3
PAHZZ	5930-263-7846	SWITCH, ROTARY SW4 2 POLES, 3 THROWS... 3 POSITION 6 V, 1 AMP 7/8 IN LG X 1-5/8 CONTINUED		EA	REF				*	*	*			15	SW4

SECTION V

TM 11-6625-799-24P

(1) SMR CODE	(2) FEDERAL STOCK NUMBER	(3) DESCRIPTION REFERENCE NUMBER & MFR. CODE USABLE ON CODE		(4) UNIT OF MEAS	(5) QTY INC IN UNIT	(6) 30-DAY GS MAINT ALLOWANCE			(7) 30-DAY GS MAINT ALLOWANCE			(8) 1-YR ALW PER 100 EQUIP CNTGCT	(9) DEPOT MAINT ALW PER 100 EQUIP	(10) ILLUSTRATION		
						(a)	(b)	(c)	(a)	(b)	(c)			(a)	(b)	
						1-20	21-50	51-100	1-20	21-50	51-100			FIGURE NO.	ITEM NO.	
		CONTINUED														
PAHZZ	5930-263-7846	CRL7121 (71590)	3/4 IN WD X 7/8 IN D SWITCH, ROTARY S3 2 POLES, 3 THROWS . 3 POSITION 6 V, 1 AMP 7/8 IN LG X 1-5/8 IN WD X 1-7/8 IN H	EA	REF				*	*	*		5	20	S3	
PAHZZ	5930-263-7846	CRL171 (71590)	SWITCH, ROTARY S4 2 POLES, 3 THROWS . 3 POSITION 6 V, . AMP 7/8 IN LG X 1-5/8 IN WD X 1-7/8 IN H	EA	REF				*	*	*			20	S4	
PAHZZ	5930-253-2349	CRL7121 (71590)	SWITCH, ROTARY SW5 2 SECT. 2 POLE, 9.. POSITION	EA	1				*	*	*		5	16	SW5	
PAHZZ	5930-253-2349	BHX7122 (71590)	SWITCH, ROTARY S5 1 POLE, 9 POSITION 7/8 IN LG X 1-5/8 IN WD X 1-7/8 IN H	EA	1				*	*	*		5	18	S5	
PAHZZ	5930-188-1051	CRL7122 (71590)	SWITCH, TOGGLE SW1 SPDT, 100 AMP, 24.. V 3-1/4 IN LG X 1-3/4 IN D X 1-1/2 IN WD	EA	1				*	*	*		5	15	SW1	
PAHZZ	5930-188-1051	8854K2 (15605)	SWITCH, TOGGLE S1 SPDT, 100 AMP, 24.. V 3-1/4 IN LG X 1-3/4 IN D X 1-1/2 IN WD	EA	REF				*	*	*			19	S1	
PAHZZ	5930-254-9289	8854K2 (15605)	SWITCH, TOGGLE SW2 DPDT 20 AMP AT 125 V AC, 30 AMP AT 24 V DC 1-5/16 IN LG X 3/4 IN WD X 3/4 IN D EXCLUDING TERM	EA	1				*	*	*		5		SW2	
PAHZZ	5930-254-9289	ST52N (81350)	SWITCH, TOGGLE S2 DPDT 20 AMP AT 125 V AC, 30 AMP AT 24 V DC 1-5/16 IN LG X 3/4 IN WD X 3/4 IN D EXCLUDING TERM	EA	REF				*	*	*			20	S2	
PAHZZ	6625-537-7310	ST52N (81350)	TERMINAL BOARD TB1 38 TURRET TYPE..... TERM 13-1/2 IN LG X 3 IN W X 3/32 IN THK	EA	1				*	*	*		3		TB1	
PAHZZ	5940-187-5120	SCC43613 (80063)	TERMINAL LUG NO-REF-DESIG SPADE TYPE .. FOR NO. 6 AWG WIRE 1-1/4 IN LG X 11/16 IN WD X 5/16 IN THK O/A	EA	4				*	*	*		5			
PAHZZ	5940-187-5121	2021 (77147)	TERMINAL LUG NO-REF-DESIG SPADE TYPE FOR NO. 6 AWG WIRE 1-1/4 IN LG X 11/16 IN WD X 15/16 IN THK O/A	EA	4				*	*	*		5			
PAHZZ	5940-199-9616	2021 (77147)	TERMINAL TM-92 NO-REF-DESIG SPADE TYPE FOR NO. 8 AWG WIRE	EA	1				*	*	*		3			
PAHZZ	5940-187-5093	SCA527B (80063)	TERMINAL TM-93 NO-REF-DESIG SPADE TYPE, FOR NO. 8 AWG WIRE	EA	1				*	*	*		3			
PAHZZ	5950-229-1865	SCA526A (80063)	TRANSFORMER, POWER, STEP-DOWN T1 FIL. TYPE INPUT 115 V AC, 50/60 CYC. SINGLE PH SECD NO.1, 2.5 V AT 8 AMP, SECD NO. 2, 2.5 V AT 8 AMP ENCL METAL CASE 18711 (73386)	EA	1				*	*	*		3	19	T1	

SECTION V

TM 11-6625-799-24P

(1) SMR CODE	(2) FEDERAL STOCK NUMBER	(3) DESCRIPTION REFERENCE NUMBER & MFR. CODE USABLE ON CODE		(4) UNIT OF MEAS	(5) QTY INC IN UNIT	(6) 30-DAY GS MAINT ALLOWANCE			(7) 30-DAY GS MAINT ALLOWANCE			(8) 1-YR ALW PER 100 EQUIP CNTGCT	(9) DEPOT ALW PER 100 EQUIP	(10) ILLUSTRATION		
						(a)	(b)	(c)	(a)	(b)	(c)			(a)	(b)	
						1-20	21-50	51-100	1-20	21-50	51-100			FIGURE NO	ITEM NO.	
X8HZZ		WASHER, NONMETALLIC E39 PLASTIC 7/16. IN DIA X NO. 8 HOLE X 1/16 IN THK 8X7-16X1-16 (82455) ANC	EA	1												E39
PAHZZ	5330-510-7683	WASHER, NONMETALLIC E9 PLASTIC 5/8.. IN DIA, 5/16 IN DIA HOLE X 9/64 IN THK WLO248 (92058) ANC	EA	8								5				E9
PAHZZ	5330-510-7683	WASHER, NONMETALLIC E10 PLASTIC 5/8.. IN DIA, 5/16 IN DIA HOLE X 9/64 IN THK WLO248 (92058) ANC	EA	REF												E10
PAHZZ	5330-510-7683	WASHER, NONMETALLIC E11 PLASTIC 5/8.. IN DIA, 5/16 IN DIA HOLE X 9/64 IN THK WLO248 (92058) ANC	EA	REF												E11
PAHZZ	5330-510-7683	WASHER, NONMETALLIC E12 PLASTIC 5/8.. IN DIA, 5/16 IN DIA HOLE X 9/64 IN THK WLO248 (92058) ANC	EA	REF												E12
PAHZZ	5330-570-7683	WASHER, NONMETALLIC E13 PLASTIC 5/8.. IN DIA, 5/16 IN DIA HOLE X 9/64 IN THK WLO248 (92058) ANC	EA	REF												E13
PAHZZ	5330-510-7683	WASHER, NONMETALLIC E14 PLASTIC 5/8.. IN DIA, 5/16 IN DIA HOLE X 9/64 IN THK WLO248 (92058) ANC	EA	REF												E14
PAHZZ	5330-510-7683	WASHER, NONMETALLIC E15 PLASTIC 5/8.. IN DIA, 5/16 IN DIA HOLE X 9/64 IN THK WLO248 (92058) ANC	EA	REF												E15
PAHZZ	5330-510-7683	WASHER, NONMETALLIC E16 PLASTIC 5/8.. IN DIA, 5/16 IN DIA HOLE X 9/64 IN THK WLO248 (92058) ANC	EA	REF												E16
PAOZZ		CABLE ASSEMBLY, POWER, ELECTRICAL NO-... REF-DESIG CORD CD-954 36 IN LG CD954 (80058)	EA	1		*	*	*	*	*	*		5	1		
PAOZZ		CABLE ASSEMBLY, POWER, ELECTRICAL NO-... REF-DESIG CORD CD-955 36 IN LG CD955 (80058)	EA	1		*	*	*	*	*	*		5	1		
PAOZZ		CABLE ASSEMBLY, POWER, ELECTRICAL NO-... REF-DESIG CORD CD-999 6 FT 4 IN LG EXCLUDING TERM CD999 (80063)	EA	1		*	*	*	*	*	*		5	1		

INDEX - FEDERAL STOCK NUMBER AND REFERENCE NUMBER
CROSS-REFERENCE TO FIGURE AND ITEM NUMBER

STOCK NUMBER	FIGURE NO.	ITEM NO.	STOCK NUMBER	FIGURE NO.	ITEM NO.
5325-141-7216	14	407	5920-852-9086		F36
5325-141-7216	14	408	5920-852-9086		F37
5330-510-7683		49	5920-852-9086		F38
5330-510-7683		E10	5930-188-1051	15	SW1
5330-510-7683		E11	5930-188-1051	19	S1
5330-510-7683		E12	5630-253-2349	16	SW5
5330-510-7683		E14	5930-253-2349	18	S5
5330-510-7683		E15	5930-254-9289		SW2
5330-510-7683		E16	5930-254-9289	20	S2
5330-570-7683		E13	5930-263-7846	15	SW3
5355-160-6096		0104	5930-263-7846	15	SW4
5355-160-6096		0105	5930-263-7846	20	S3
5355-160-6096		0105	5930-263-7846	20	S4
5355-161-1171			5930-265-6296	16	SW10
5355-162-9110		0101	5930-376-9938	20	S6
5355-162-9110		0102	5930-376-9938	20	S7
5355-162-9110		0103	5930-376-9939	20	S8
5905-114-5489	16	R8	5930-376-9939	20	S13
5905-114-5489	17	R10	5930-376-9939	22	S11
5905-174-2725	18	P27	5930-376-9940	20	S14
5905-174-2725	14	Q28	5930-376-9940	22	S9
5905-196-2733	14	Q27	5930-376-9940	22	S12
5905-196-2733	14	Q28	5930-376-9941	20	S10
5905-199-2383	13	R30	5930-548-5394	15	SW14
5905-199-2383	13	Q31	5930-548-5394	16	SW5
5905-221-8056	15	Q7	5930-548-5394	16	SW7
5905-222-4323	16	R10	5930-548-5394	16	SW9
5905-222-4323	16	R11	5930-548-5394	16	SW11
5905-228-3952	13	R32	5930-548-5394	16	SW12
5905-229-0301	14	E1	5930-548-5394	16	SW13
5905-251-5028	17	Q17	5930-548-5394	22	SW8
5905-263-2953	16	Q9	5935-149-2827		P13
5905-264-9243	19	Q24	5935-537-4363		P201
5905-264-9243	18	Q25	5940-187-5093		
5905-264-9243	18	Q26	5940-187-5120		
5905-279-5689	17	Q21	5940-187-5121		
5905-284-3190	19	Q29	5940-199-9616		
5905-405-6287	22	Q2	5940-260-0447		C301
5905-405-6287	22	Q3	5940-260-0447		C302
5905-405-6287	22	Q4	5940-405-8496		
5905-405-6287	22	Q5	5940-537-6591		E10
5905-502-8927	16	R23	5950-229-1865	19	T1
5905-539-5653	17	R11	5970-242-7762		E17
5905-542-8435	17	R19	5970-242-7762		E18
5905-542-9315	17	Q9	5970-242-7762		E19
5905-549-3350	17	R16	5970-242-7762		E20
5905-549-9200	17	Q22	5970-242-7762		E21
5905-552-2442	17	R14	5970-242-7762		E22
5905-552-7204	17	R10	5970-242-7762		E23
5905-556-3783	16	Q12	5970-242-7762		E24
5905-556-3783	16	P13	5970-281-0899		E25
5905-556-4623	14	P15	5970-281-0899		E26
5905-577-0806	14	Q29	5970-281-0899		E27
5905-642-1962	14	Q30	5970-281-0899		E28
5905-642-1962	14	F31	5970-281-0899		E29
5905-642-2779	15	Q6	5970-281-0899		E30
5905-666-3048	17	Q23	5970-281-0899		F31
5905-752-3164	17	Q22	5970-281-0899		F32
5910-160-2264	15	C1	5970-281-0899		F33
5910-543-0128	15	C2	5970-281-0899		F34
5920-012-0151		E102	6130-548-3854	15	QE1
5920-012-0151	23	F2	6130-548-0854	15	QF2
5920-131-0910	15	E103	6130-548-0854	17	C11
5920-131-9910		F3	6130-548-0854	17	C12
5920-189-0953	19	E101	6145-548-1255		
5920-189-0853		F1	6145-635-3740		
5920-214-5150	22		6145-849-9758		
5920-280-4254		F43	6525-235-4766	15	M1
5920-280-4254		F47	6625-235-4766	15	M2
5920-284-6800		F41	6625-510-1638		S2
5920-285-0755		F41	6625-510-4679	22	S2
5920-285-0755		F47	6625-510-4679	22	S3
5920-568-5866		X42	6625-510-4679	22	Q4
5920-636-0128			6625-510-4679	22	Q5
5920-852-9086		A1	6625-537-7310		T01
		F35			

SECTION VII

TM 11-6625-799-24P

REFERENCE NO.	NFR CODE	FIG. NO.	ITEM NO.	REFERENCE NO.	NFR CODE	FIG. NO.	ITEM NO.
AK8AD44193	54294	17	R21	SCD11580-5	80063		F301
A1111B-2	76149			SCD11580-5	80063		D302
BHX7122	71590	16	SVF	ST52H	81350		SM2
B160	73602	15	PE	ST52H	81350	20	S2
B160	73602	15	PE2	S292-11	75376		Q1A4
B160	73602	17	CR1	S292-11	75376		Q1J5
B160	73602	17	CR2	S292-11	75376		F106
CD954	80058	1		VG3044	92058	22	P2
CD955	80058	1		VG3044	92058	22	R3
CD999	80063	1		VG3044	92058	22	R4
C151	71440	22	R2	VG3044	92058	22	R5
C151	71440	22	R3	WL0248	92058		F5
C151	71440	22	R4	WL0248	92058		F5A
C151	71440	22	R5	WL0248	92058		E11
CP51-2	96095	16	R12	WL0248	92058		F12
CP51-2	96095	16	R13	WL0248	92058		F13
CP1-1	96095	16	R23	WL0248	92058		F14
CP1-2-1	96095	16	R9	WL0248	92058		F15
CP1-2-1	96095	16	R10	WL0248	92058		E16
CP1-2-1	96095	16	R11	1060	82389	20	S6
CP1-2-1	96095	17	R19	1060	82389	20	S7
CP1-2-1A	96095	17	R8	1061	82389	20	S8
CP1-2-100K	96095	17	R14	1061	82389	20	S13
CP1-2-2700	96095	17	R20	1061	82389	22	S11
CP1-2-8K	96095	16	R15	1062	82389	20	S14
CP1-300K	96095	17	R18	1062	82389	22	S9
CP2-900K	96095	17	R17	1062	82389	22	S12
CP70E1FJ105K	81350	15	F1	1063	82389	20	S10
CP70E1FJ405V	81350	15	F2	125001	75915		F35
CRL171	71590	20	S3	125001	75915		F36
CRL7121	71590	15	S43	125001	75915		F37
CRL7121	71590	15	S44	125001	75915		F38
CRL7121	71590	20	S4	1342	75915		FU1
CRL7122	71590	18	S5	1342	75915	22	F1
CO-06LGF6-185J0420	96906			15A	75915		FJ2
HCMQLR4AG	10133		FH1	15A	75915	23	F2
HCMQLR4AG	10133		XF1	18711	73386	19	F1
HKPOLB	10133		FH2	1935	54274	17	R22
HKPOLB	10133		XF2	2003	37942	15	SW14
HM3-3-1-2	88947	15	M1	2003	37942	16	SW6
HM3-3-1-2	88947	15	M2	2003	37942	16	SW7
P318CCT	71785		P191	2003	37942	16	SW9
P408CCT	71785		P291	2003	37942	16	SW11
RC20GF823J	22222	17	R10	2003	37942	16	SW12
RC20GF823J	81349	16	R8	2003	37942	16	SW13
RC32GF225K	81350	17	R23	2003	37942	22	SW8
RH25X2001F	81349	17	R16	2006	37942	16	SW10
RN25X7001F	81349	17	R11	2021	77147		
RP151FK6R0KK	81350	15	R7	230	70485	14	MP7
RP301FK252KK	81350	18	R32	230	70485	14	MP9
RP301FK5R0KK	81350	14	R1	45	00629		F10
RW34G202	81350	18	R24	6013	44655		F17
RW34G202	81350	18	R25	6013	44655		E18
RW34G202	81350	18	R26	6013	44655		F19
RW34V2R0	81349	15	R6	6013	44655		F20
RW35F200	81350	14	R28	6013	44655		F21
RW35F202	81350	14	R27	6013	44655		E22
RW36G202	81350	18	R27	6013	44655		E23
RW36G202	81350	18	R28	6013	44655		E24
RW37G202	81350	14	R29	6017	44655		F25
RW38G202	81350	18	R29	6017	44655		E26
RW38V102	81350	14	R30	6017	44655		F27
RW38V102	81350	14	R31	6017	44655		E28
RW39G102	81350	18	R30	6017	44655		F29
RW39G102	81350	18	R31	6017	44655		F30
SCA526A	80063			6017	44655		F31
SCA5278	80063			6017	44655		F32
SCB43606	80063			6017	44655		F33
SCB43608	80063		P191	6017	44655		E34
SCB43608	80063		P192	621500	75915	15	FJ5
SCB43618	80063		P193	621500	75915	19	F3
SCB43630	80063		A7	71-4945	81351		
SCB43630	80063		F43	8X7-16X1-16	82455		F39
SCB43631	80063		XF3	8854K2	15605	15	SW1
SCC18899	80063		41	8854K2	15605	19	S1
SCC43613	80063		T91	9326-1-2	71477		
				9435-1-2	13173		

By Order of the Secretary of the Army:

CREIGHTON W. ABRAMS
General, United States Army
Chief of Staff

Official:

VERNE L. BOWERS
Major General, United States Army
The Adjutant General

Distribution

Active Army:

USASA (2)
CNGB (1)
ACSC-E (2)
USAARENBD (2)
USAMB (10)
AMC (1)
FORSCOM (5)
ARADCOM (2)
ARADCOM Rgn (2)
OS Maj Comd (4)
LOGCOMDS (5)
MICOM (2)
IECOM (2)
USASTRATCOM (4)
HISA (ECOM) (18)
MDW (1)
Armies (2)
Corps (2)
Svc Colleges (2)
USASESS (5)
USAADS (2)
USAFAS (2)
USAARMS (2)
USAIS (2)
USAES (2)
USAINTS (3)

NG: None

USAR: None

For explanation of abbreviations used, see AR 310-50.

USACDCEC (5)
Instl (2) except
Fort Gordon (10)
Fort Huachuca (10)
Fort Carson (10)
WSMR (2)
Army Dep (2) except
LBAD (14)
SAAD (30)
TOAD (14)
LEAD (7)
ATAD (10)
USA Dep (2)
Sig Sec USA Dep (2)
Sig Dep (5)
Sig FLDMS (1)
USAERDAA (1)
USAERDAW (1)
MAAG (1)
USARMIS (1)
Ft. Richardson (ECOM Ofc) (2)
WRAMC (1)
Units org under fol TOE:
(1 copy each)
11-158
29-134
29-136

END

8-1-83

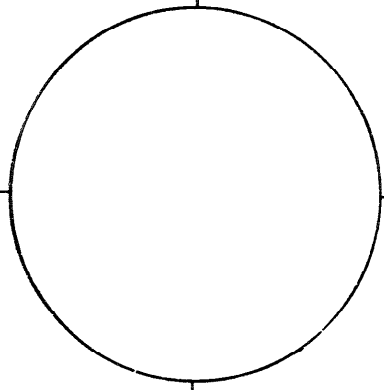
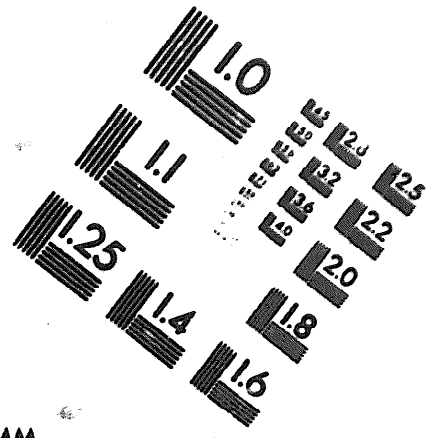
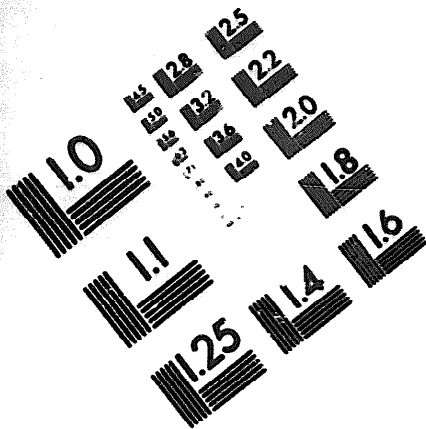
DATE





DEPARTMENT OF THE ARMY

MICROFORM
TEST TARGET



150 MM

1.0 mm (e= .81 mm)

ABCDEFGHIJKLMN O PQRSTU VWXYZ 1234567890
abcdefghijklmnopqrstuvwxyz %& / # 1/2 1/4 3/4 — = + x & @ *

1.5 mm (e= 1.09 mm)

ABCDEFGHIJKLMN O PQRSTU VWXYZ 1234567890
abcdefghijklmnopqrstuvwxyz %& / # 1/2 1/4 3/4 — = + x & @ *

2.0 mm (e= 1.37 mm)

ABCDEFGHIJKLMN O PQRSTU VWXYZ
abcdefghijklmnopqrstuvwxyz
1234567890 \$ % & / # 1/2 1/4 3/4 — = + x & @ *

2.5 mm (e= 1.77 mm)

ABCDEFGHIJKLMN O PQRSTU VWXYZ
abcdefghijklmnopqrstuvwxyz
1234567890 \$ % & / # 1/2 1/4 3/4 — = + x & @ *

1.0 mm (e= .81 mm)

ABCDEFGHIJKLMN O PQRSTU VWXYZ 1234567890
abcdefghijklmnopqrstuvwxyz %& / # 1/2 1/4 3/4 — = + x & @ *

1.5 mm (e= 1.09 mm)

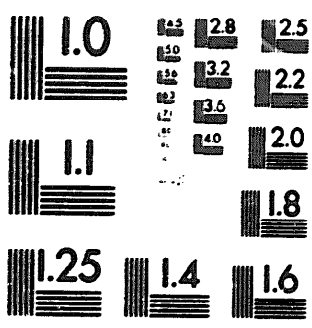
ABCDEFGHIJKLMN O PQRSTU VWXYZ 1234567890
abcdefghijklmnopqrstuvwxyz %& / # 1/2 1/4 3/4 — = + x & @ *

2.0 mm (e= 1.37 mm)

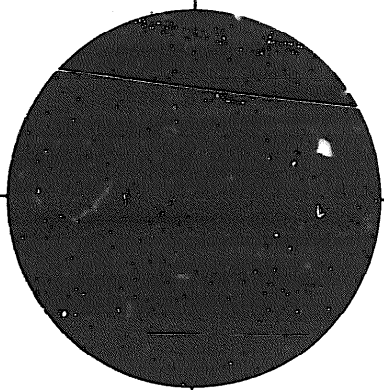
ABCDEFGHIJKLMN O PQRSTU VWXYZ
abcdefghijklmnopqrstuvwxyz
1234567890 \$ % & / # 1/2 1/4 3/4 — = + x & @ *

2.5 mm (e= 1.77 mm)

ABCDEFGHIJKLMN O PQRSTU VWXYZ
abcdefghijklmnopqrstuvwxyz
1234567890 \$ % & / # 1/2 1/4 3/4 — = + x & @ *



200 MM



250 MM

